

LUMIGEN[®] TMA-6 CHEMILUMINESCENT SUBSTRATE

Features

Excellent Sensitivity

Less than 5 pg of β -galactosidase can be detected on Western Blots, and less than 10^{-18} moles HRP in solution based assays.

Rapid Peak Intensity

Short exposures; high signal intensity permits rapid visualization of blots.

Linear Calibration Curves

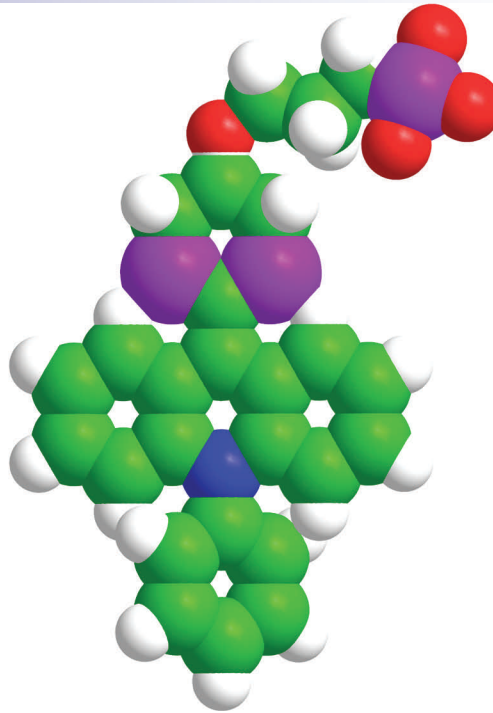
Slope of log-log plots equal 1.0 - One order of magnitude more enzyme yields one order of magnitude more light. Light intensities can be read at any time to produce linear calibration curves.

Sustained Luminescence

Timing is not critical. Sustained signal duration over several hours allows convenient imaging.

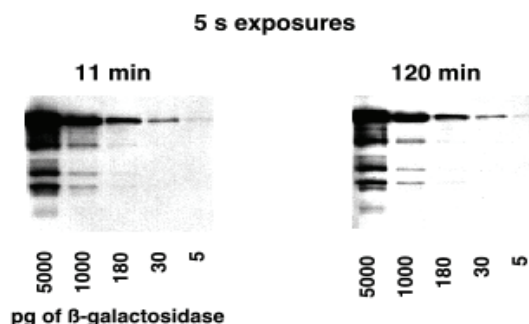
Temperature Insensitive

Analytical results are insensitive to temperature from 22°C - 35°C reducing the need for precise temperature control.



Lumigen TMA-6 is a novel substrate for the chemiluminescent detection of peroxidase conjugates on membranes and in solution based assays. Reaction of the substrate with an HRP label generates sustained luminescence of the highest intensity. A key benefit of Lumigen TMA-6 is its superior stability. Unlike most other chemiluminescent peroxidase substrates, the working solution is stable at room temperature for at least three weeks and at 4°C for at least four months. With this stability, the working solution can be prepared and stored for later use.

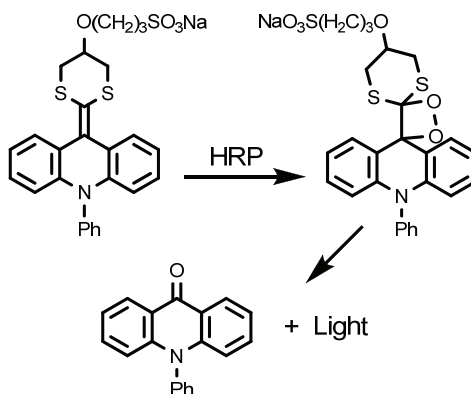
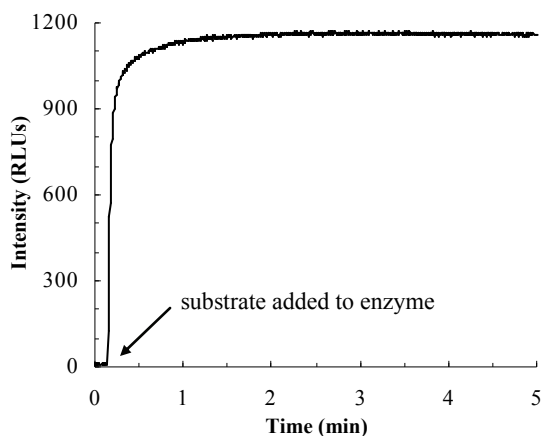
WESTERN BLOTTING



Blotted antigen was bound to anti- β -galactosidase HRP conjugate and detected with TMA-6. All quantities of antigen down to 5 pg could be imaged after an 11 min. incubation period and a 5 sec exposure to X-ray film. Light intensity was essentially constant for 2 hours.

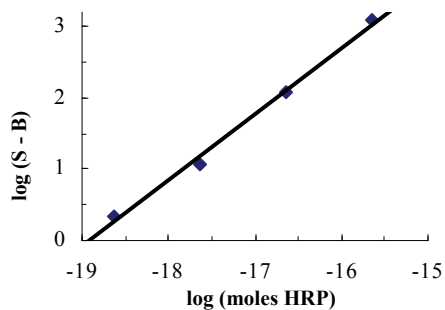
LUMIGEN TMA-6 CHEMILUMINESCENT SUBSTRATE

RAPID PEAK INTENSITY



EXCELLENT SENSITIVITY

In homogeneous enzyme assays Lumigen TMA-6 exhibits excellent sensitivity and a linear response over four orders of magnitude of HRP dilutions.



PRODUCT SPECIFICATIONS

Enzyme	Horseradish Peroxidase
Application	Blotting / ELISA
Analytical Sensitivity	10^{-17} moles HRP on WB; $<10^{-18}$ moles HRP in solution assays
Storage Conditions	2-8° C; Store in amber bottle
Stability	1 Year stored at 2-8° C
Working Solution	2 Part solution (A & B); Stability of working solution: 21 Days at Room Temperature, 4 months at 4° C

ORDERING INFORMATION

Description	Cat. No.
Lumigen TMA-6 (100 mL; 50 mL A & 50 mL B)	TMA-100
Lumigen TMA-6 (1 L; 500 mL A & 500 mL B)	TMA-1000

CONTACT INFORMATION



22900 West Eight Mile Road
Southfield, Michigan 48033
Tel: 248.351.5600
Fax: 248.351.0518
Email: marketing@lumigen.com

Visit www.lumigen.com for more information

Lumigen TMA-6