

LUMI-PHOS® PLUS CHEMILUMINESCENT SUBSTRATE

Features

Excellent Sensitivity

10^{-21} moles Alkaline Phosphatase can be detected.

Sustained Luminescence

With low concentrations of enzyme, the light intensity remains constant for more than an hour.

Linear Calibration Curves

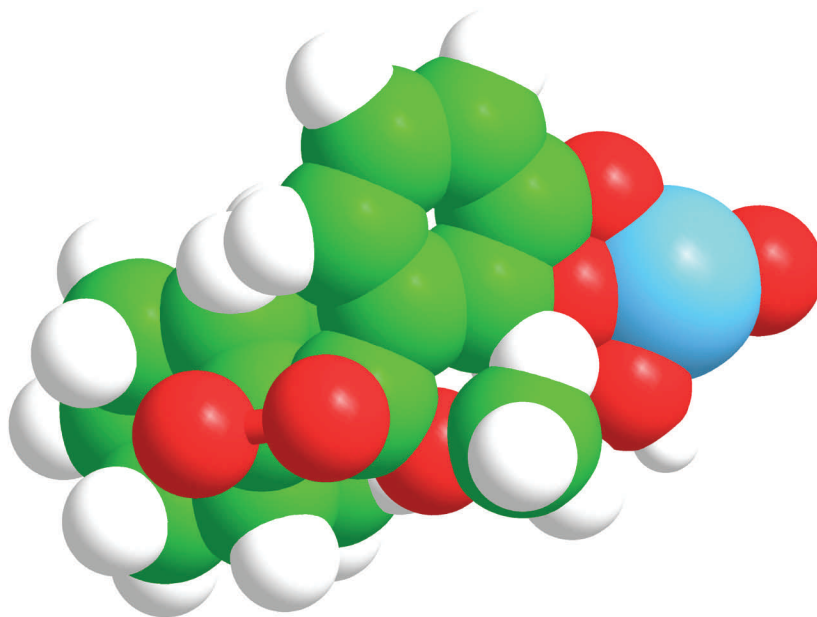
The luminescence intensity at any fixed time point is a direct measure of the concentration of the enzyme.

High Stability

Consistent, reproducible reaction in homogeneous solution and on nylon membranes.

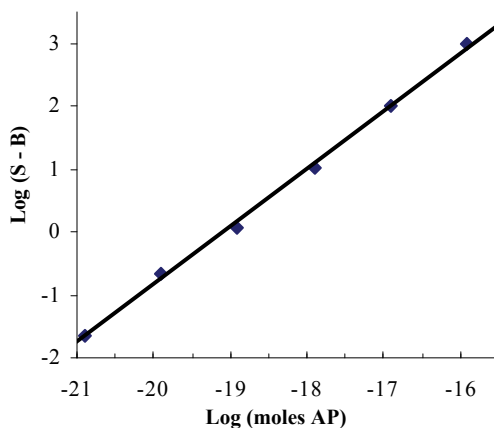
Low Reagent Background

Long Shelf Life



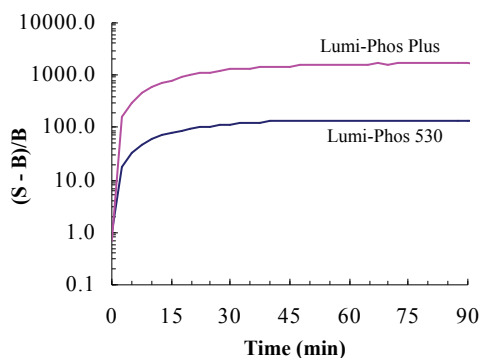
Lumi-Phos Plus is a novel, ready-to-use formulation containing Lumigen PPD (4-methoxy-4-(3-phosphatophenyl)spiro[1,2-dioxetane-3,2'-adamantane], disodium salt) and a patented enhancer in 2-amino-2-methyl-1-propanol buffer (pH 9.6). This formulation provides highly sensitive chemiluminescent detection of alkaline phosphatase with DNA probes or antibody conjugates in solution and on solid supports such as membranes. Light emission is maximal at 454 nm with Lumi-Phos Plus.

EXCELLENT SENSITIVITY



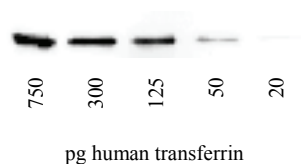
Lumi-Phos Plus formulation provides superior signal to background over Lumi-Phos 530. 10^{-21} moles of Alkaline Phosphatase can be detected within minutes of enzyme introduction.

KINETIC PROFILE



Lumi-Phos Plus has a significantly higher signal to background ratio than Lumi-Phos 530 due to its lower reagent background. Lumi-Phos Plus reaches 90% of maximum light output approximately 27 minutes after introduction of enzyme in homogeneous assays at 37° C.

WESTERN BLOTTING



This image from a Western blot analysis of human transferrin was made after a 50 min incubation of the PVDF membrane with Lumi-Phos Plus with a 20 sec exposure to Kodak X-OMAT film. The transferrin standards were detectable down to 20 pg/slot.

PRODUCT SPECIFICATIONS

Enzyme	Alkaline Phosphatase
Application	ELISA / Western Blotting
Analytical Sensitivity	10^{-21} moles AP
Storage Conditions	2-8° C; Store in amber bottle
Stability	2 Years at 2-8° C
Working Solution	1 Part, Ready to Use Solution

ORDERING INFORMATION

Description	Cat. No.
Lumi-Phos Plus (100 mL)	P-701
Lumi-Phos Plus (125 mL)	P-7125
Lumi-Phos Plus (530 mL)	P-7530
Lumi-Phos Plus (1 L)	P-7000
Lumi-Phos Plus (10 L)	P-7010

CONTACT INFORMATION



22900 West Eight Mile Road
 Southfield, Michigan 48033
 Tel: 248.351.5600
 Fax: 248.351.0518
 Email: marketing@lumigen.com

Visit www.lumigen.com for more information

Lumi-Phos Plus